

# Muli-Mini mono

## Product information for the product group

### ACO Product benefits

- Ready to connect
- Ergonomic carrying handles
- Different inlet heights can be selected
- High usable volume – up to 140 l
- All components with high chemical stability
- Pump can be dismantled without tools
- Designed to fit through narrow doorways 700 mm
- Low weight

### ■ Areas of application

- Laundries
- Basement areas
- Storerooms

### ■ Polyethylene tank

- Scour outlet R 1"
- Service opening for simple maintenance, diameter: 340 mm
- Fixing kit to secure against floating
- Connector for hand membrane pump DN 50
- 4 horizontal intake sockets DN 100
- 1 vertical inlet nozzle DN 100
- Optionally 1 vertical inlet nozzle DN 50 (accessory)
- 1 ventilation socket DN 70

### ■ Connection pressure line

- Special backflow stop with ball in housing
- With venting and fixing screw
- Connection: Rp 2"

### ■ Grey water submerged pumps

- With 3-phase submerged motor pump: 400 V, 50 HZ
- IP 68 protection
- Made of stainless steel
- Two circular rotating mechanical seals with an oil chamber between them
- With blockage-free free flow impeller
- 10 m mains cable

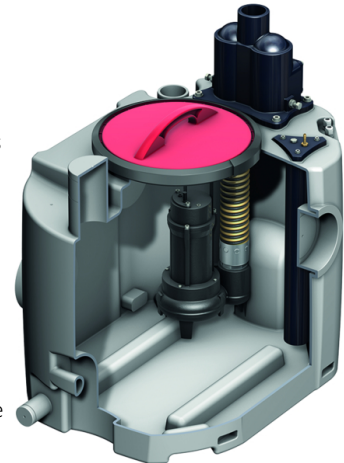
### ■ Level switching

- Pneumatic level switching with 10 m control lines
- Optionally with air bubble injection for increased operational security when installing downstream of grease separators (accessory)

### ■ Controls

- IP 54 protection
- 1.5 m cable and EEC plug (16 A)
- Potential-free collective fault message and operating signal

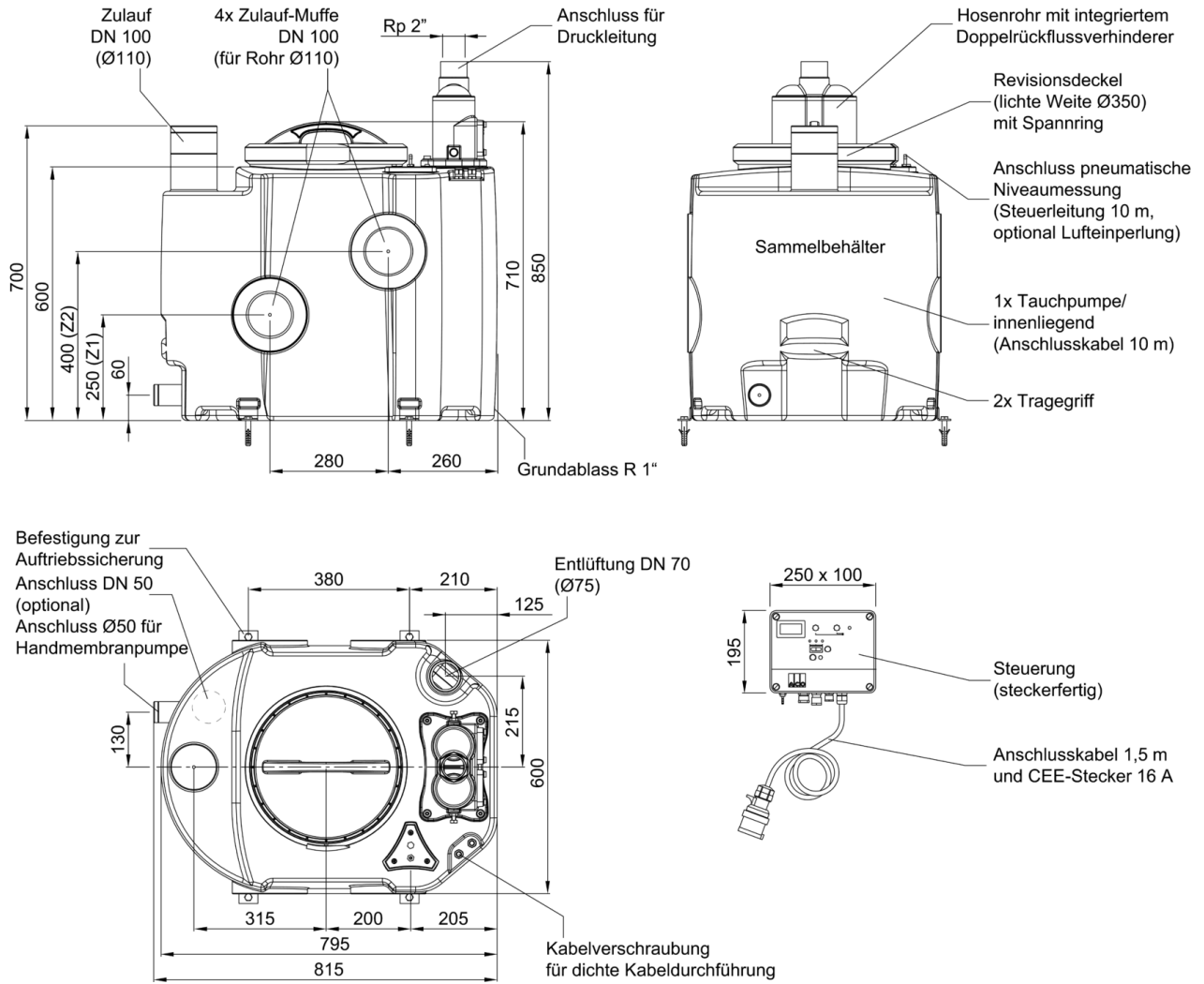
### ■ Tested to DIN EN 12050-2



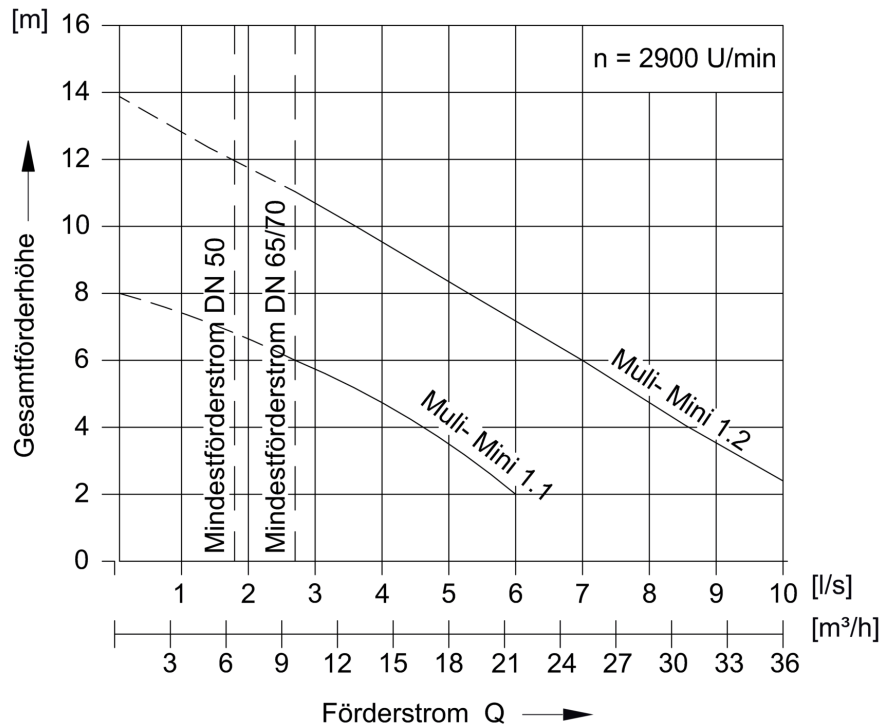
## Item Technical Data 1206.00.06

Type	Motor power		Power consumption	Voltage	Rev count	Partic- ular size	Usable volume			Total volume	Weight
	P1	P2					Inlet height Z1	Inlet height Z2	Top inlet		
	[kW]	[kW]	[A]	[V]	[r/min]	[mm]	[l]	[l]	[l]	[l]	[kg]
Muli-Mini MDP 1.2	1.5	1.1	2.6	400	2900	50	60	108	140	190	50

**Dimensions**

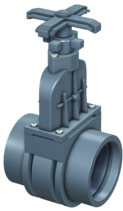



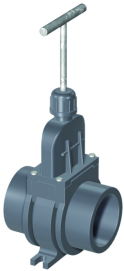

**Performance parameters**



Type	Deliv- ery head [m]	Delivery flow Q with overall delivery head H						Media temperature	
		2 m	4 m	6 m	8 m	10 m	12 m	Normal [°C]	Maximum [°C]
Muli-Mini MDP 1.2	2 – 12	10.3	8.7	7.0	5.4	3.6	1.8	40	65

**Accessories**

Description	Used with	Weight	PU	Item number
		[kg]	[piece]	
 <p><b>Inlet valve DN 100</b></p> <ul style="list-style-type: none"> <li>Made of PVC</li> <li>110 mm push socket on both sides with rim sealing ring</li> <li>Overall dimensions: 176 x 330 mm (L x H)</li> </ul>	<ul style="list-style-type: none"> <li>Wastewater lifting plant</li> <li>Polyethylene grease separator</li> <li>Polyethylene starch separator</li> <li>Upstream tank plant</li> <li>Typ 2 and 4</li> <li>LipuMobil-P – Type 0.5</li> </ul>	3.1	1	0175.13.84
 <p><b>Inlet valve DN 100</b></p> <ul style="list-style-type: none"> <li>Made out of PVC</li> <li>Spigot Ø110 on both sides for sleeveless pipe systems made of cast iron or plastic</li> <li>Total dimensions: 176 x 360 mm (L x H)</li> </ul>	<ul style="list-style-type: none"> <li>Grease separator made of polyethylene</li> <li>Starch separator made of polyethylene</li> <li>Upstream tank systems type 2 and 4</li> <li>LipuMobil – type 0.5</li> </ul>	5.9		0175.31.87

Description	Used with	Weight	PU	Item number
		[kg]	[piece]	
 <p><b>Inlet valve DN 50</b></p> <ul style="list-style-type: none"> <li>■ Made of PVC</li> <li>■ DN 50</li> <li>■ With sealing ring as per DIN EN 19538</li> </ul>	<ul style="list-style-type: none"> <li>■ LipuMobil-P 0,8</li> <li>■ Muli-Mini</li> </ul>	0.4		0175.18.33
 <p><b>Connection ports</b></p> <ul style="list-style-type: none"> <li>■ DN 50</li> <li>■ Duct Type A 40 x 50 x R 1 3/4"</li> <li>■ Minimum height: 250 mm</li> </ul>	<ul style="list-style-type: none"> <li>■ Muli-Mini mono/duo</li> </ul>			0175.09.27

You can find further accessories under → <https://www.buildingdrainage.aco/suche/?q=1206.00.06>